



Vehicle Concept Characteristics - LV 41.4004.10051

UPPER STAGE

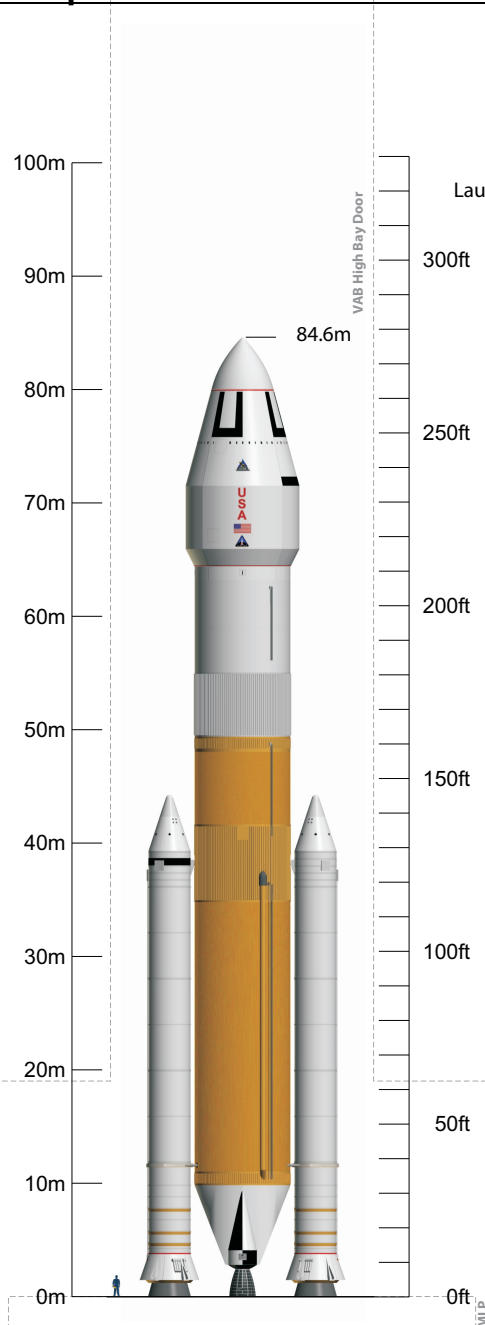
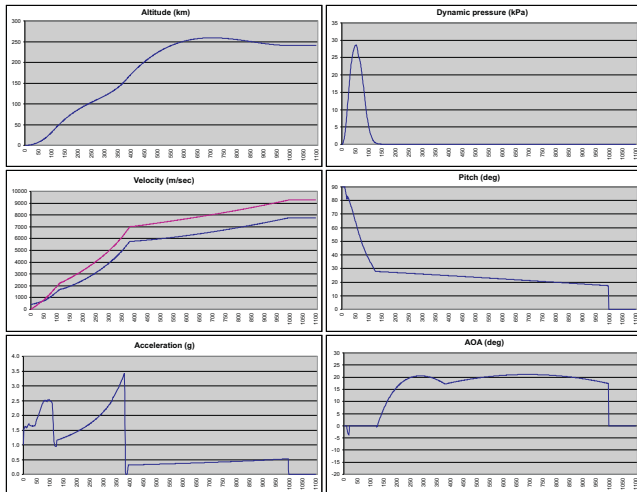
Design Heritage	Boeing ACES / Lockheed-Martin WBC
Propellants	LOX / LH2
Maximum Gross Propellant	386,953lb (175,519kg)
Usable Ascent Propellant	154,086lb (69,892kg)
Ascent Flight Performance Reserve	6,384lb (2,896kg)
Usable Post-Ascent Propellant	-
Post-Ascent Flight Performance Reserve	-
Unusable Residuals	3,799lb (1,723kg)
Ascent In-Flight Losses	225lb (102kg)
RCS Propellant	992lb (450kg)
Propellant Offload	56.91%
Stage pmf	0.9306
Dry Mass	24,777lb (11,238kg)
Burnout Mass	28,576lb (12,962kg)
# Engines / Type	6 / RL-10B-2
Engine Thrust (@ 100%) Vac	24,750lbf (11,226kgf / 110,093N)
Engine Isp (@ 100%) Vac	459.0s
Mission Power Level	100.0%
Upper Stage Ascent Burn Time	614.9s
LEO Loiter Period	4 + 1 days
Pre-TLI Overboard Mass	-
ASE*	1,102lb (500kg)

DYNAMICS

Thrust : Weight @ Liftoff	1.541 : 1
Max Dynamic Pressure	601.4psf (28,796Pa)
Max g's During Ascent	3.59g
Insertion Altitude	170.0nmi (314.8km)

ASCENT PERFORMANCE

Delivery Orbit	20.9 x 172.7nmi, 29.0°
Payload w/ regular NASA GR&A's	222,103lb (100,744kg) †
Payload w/ additional 10% Reserve	199,892lb (90,670kg) †



Launch Site

KSC LC-39 (Latitude: 28.6084°)

GLOW

Payload Fairing	32.8 x 18.4ft (10.0 x 5.6m)
Payload Envelope	30.2 x 18.4ft (9.2 x 5.6m)
Payload Fairing Jettison Mass	15,916lb (7,219kg)
Payload Fairing Jettison	334.4s @ 72.3nmi
Launch Abort System Jettison Mass	-
Launch Abort System Jettison	-

BOOSTERS (each)

Design Heritage	Shuttle RSRM - Flown Unchanged
Propellants	PBAN
Usable Propellant	1,111,604lb (504,215kg)
Stage pmf	0.8561
Dry Mass	183,948lb (83,437kg)
Burnout Mass	186,864lb (84,760kg)
# Boosters / Type	2 / 4-segment Shuttle RSRM
Booster Thrust (@ 0.7s) SL	2,892,912lbf (1,312,203kgf / 12,868,314N)
Vac	3,142,302lbf (1,425,324kgf / 13,977,656N)
Booster Isp (@ 0.7s) SL	237.0s
Vac	269.1s
Booster Burn Time	123.8s

CORE STAGE

Design Heritage	Shuttle Super Light Weight Tank ET
Propellants	LOX / LH2
Gross Propellant	1,621,191lb (735,360kg)
Usable Ascent Propellant	1,604,979lb (728,006kg)
Unusable Residuals	16,047lb (7,279kg)
In-Flight Losses	325lb (147kg)
Propellant Offload	0.00%
Stage pmf	0.9075
Dry Mass	147,479lb (66,895kg)
Burnout Mass	163,526lb (74,174kg)
# Engines / Type	4 / SSME-Block-II
Engine Thrust (@ 104.5%) SL	392,326lbf (177,956kgf / 1,745,155N)
Vac	490,847lbf (222,644kgf / 2,183,396N)
Engine Isp (@ 104.5%) SL	361.4s
Vac	452.2s
Mission Power Level	104.5%
Core Burn Time	384.1s

INTERSTAGE

Dry Mass	8,748lb (3,968kg)
----------	-------------------

* ASE is part of the Payload, not additional

† Ascent Performance for Jupiter-246 protects for Upper Stage Single-Engine-Out and full FPR